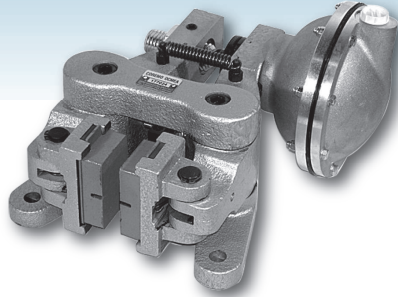
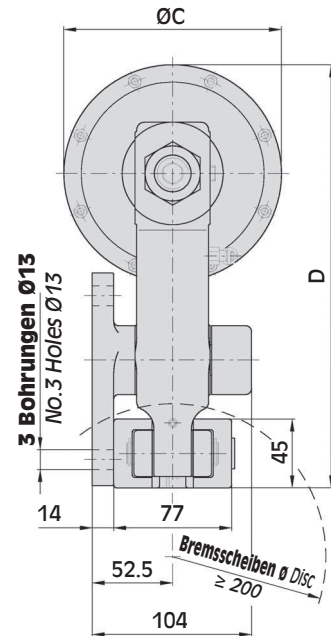
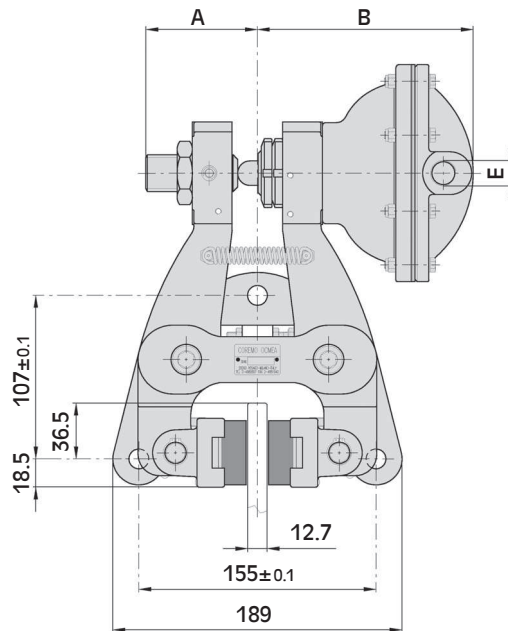
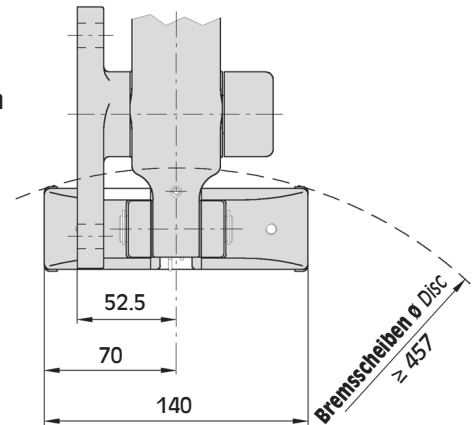


# A

**Auch verfügbar für Brems Scheibendicke 25,4 mm.**  
*Available also for disc thickness 25,4 mm.*



**Ausführung Doppelschuh**  
*Double pad version*



## ABMESSUNGEN/DIMENSIONS

TYP SIZE	Teil-Nr Product Number		A	B	ØC	D	E	Luftvolumen Air Volume dm <sup>3</sup>	Gewicht Weight kg
	S.P.	S.U.							
<b>A05</b>	A3242	A3244	75.5	106.5	74	242.5	1/4" Anschluss	0.025	10.8
<b>A1</b>	A3250	A3252	73	119	116	263.5	1/4" Anschluss	0.1	11.1
<b>A2</b>	A3258	A3260	73	141	142	276.5	3/8" Anschluss	0.2	11.9
<b>A3</b>	A3266	A3268	73	159.5	184	297.5	3/8" Anschluss	0.4	13.1
<p><b>S.P. = Standard / Standard Production</b>  <b>S.U. = Ausführung mit Belag-Verschleissindikator / With Wear Indicator</b></p>									

**Warnung:** Das anfängliche Bremsmoment neuer Bremsen/Bremsbeläge kann um 30-50% zu den Katalogwerten verringert sein, bis Bremsbeläge u. -scheiben eingelaufen sind!  
*Warning:* The initial torque on new units can be 30% to 50% less than the catalogue value until the friction facing and friction disc are lapped or worn in.

## Techn. Daten

Bremskraft F:

A05	1730 N bei 6 bar
A1	4100 N bei 6 bar
A2	8000 N bei 6 bar
A3	13700 N bei 6 bar

dyn. Bremsmoment:

$$= F \cdot (\text{Scheibenradius(m)} - 0.03) = \text{Nm}$$

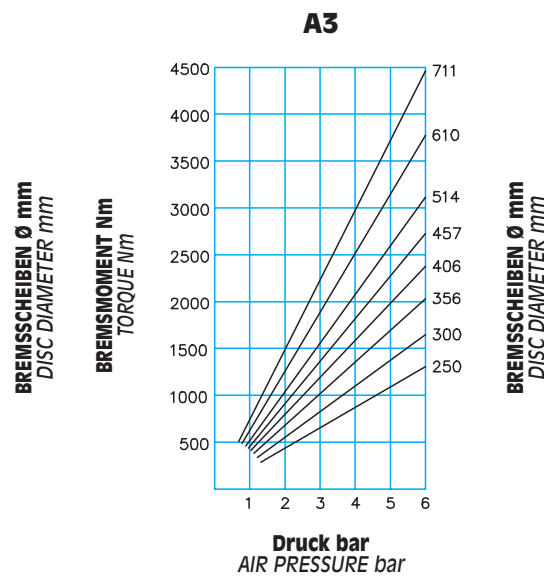
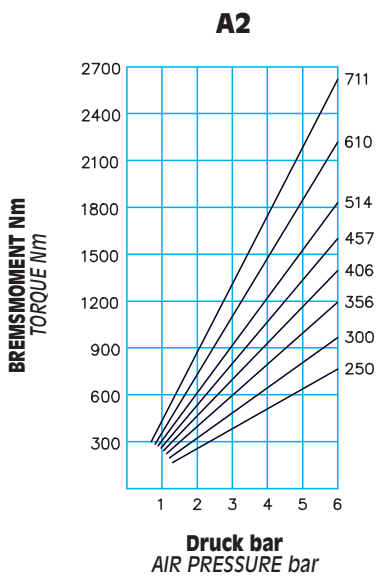
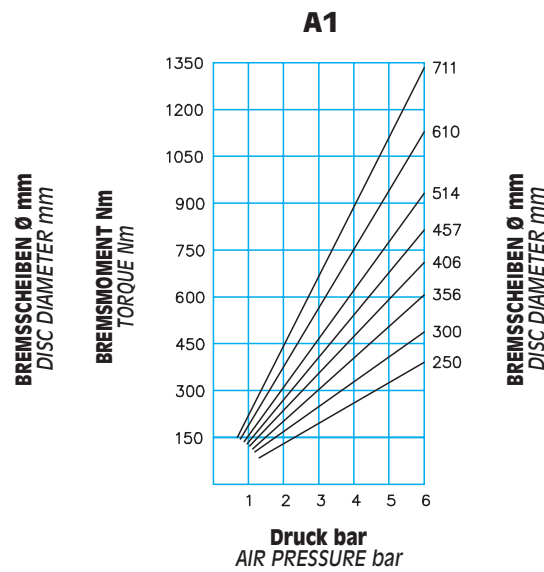
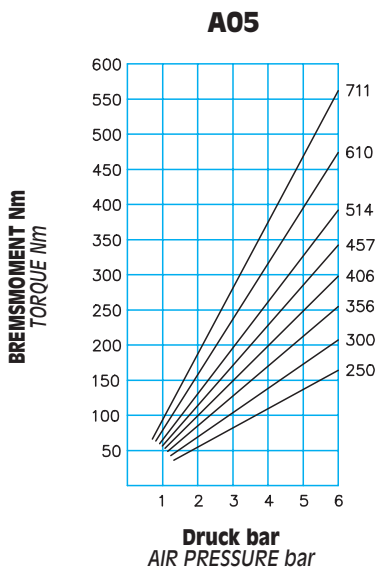
Max. Belagverschleiss: 16 mm

Bremsbelagsdicke (neu): 16 mm

Dauerwärmeleistung: Qc: 1.7 kW

Dauerwärmeleistung:

Ausführung mit Doppelschuh Qc: 2.7 kW



## Technical data

Braking force F:

A05	1730 N at 6 bar
A1	4100 N at 6 bar
A2	8000 N at 6 bar
A3	13700 N at 6 bar

Dynamic torque

$$= F \cdot (\text{disc radius in m} - 0.03) = \text{Nm}$$

Max total wear: 16 mm

Thickness of new lining: 16 mm

Continuous thermal capacity

Qc: 1.7 kW

Continuous thermal capacity

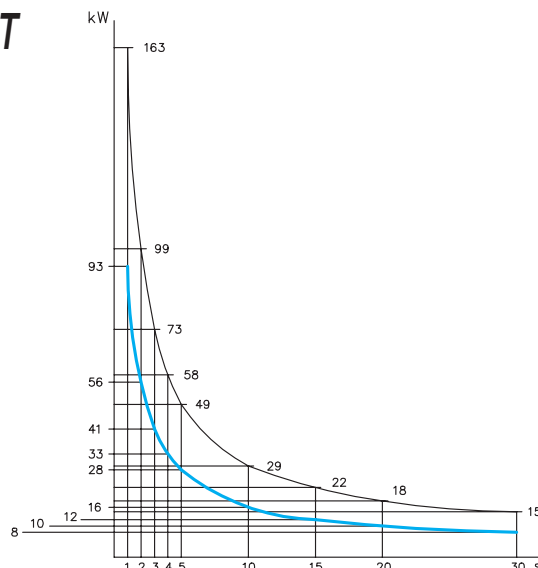
for double pad version

Qc: 2.7 kW

## DIAGRAMM/CHART

**Therm. Kapazität für Notstop**

Thermal capacity for emergency stop



Doppelschuh Double pad  
Standard Standard pad