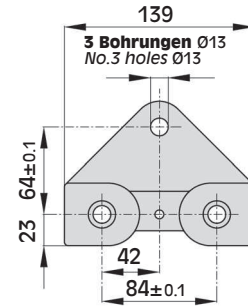
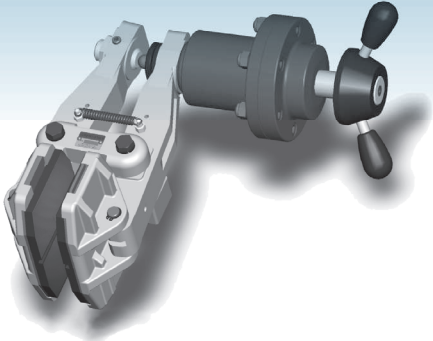
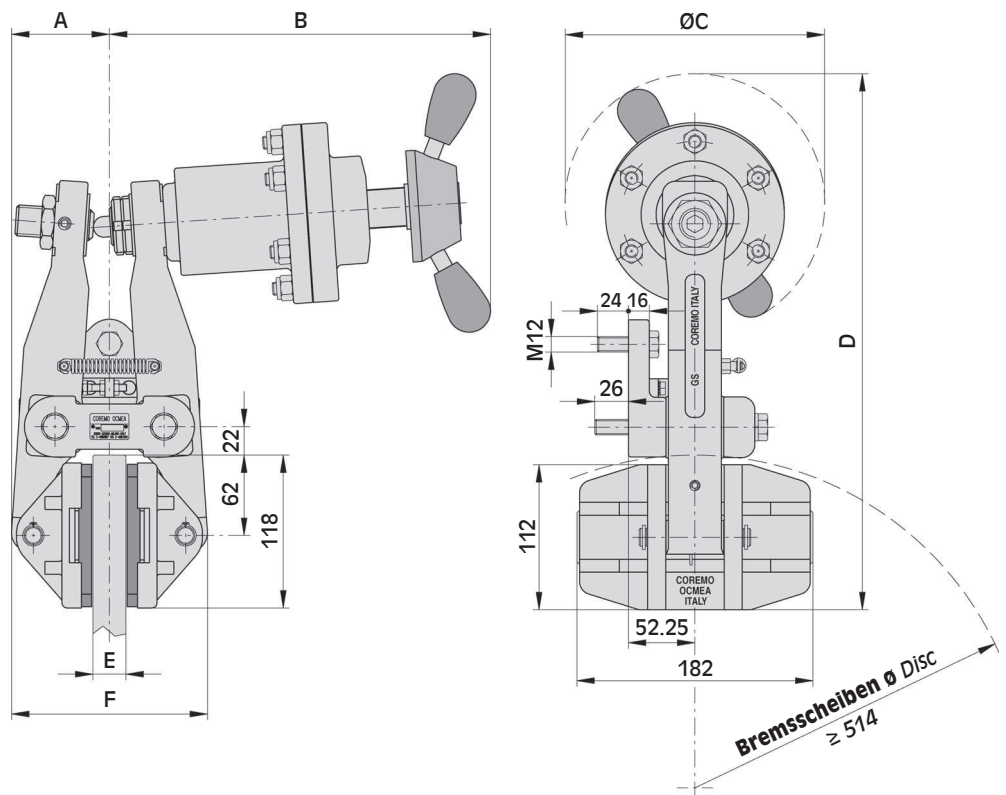


G-M



Ansicht Anschraubfläche Bremse
View on caliper base



ABMESSUNGEN/DIMENSIONS

TYP SIZE	Teil-Nr Product Number	A	B	ØC	D	E	F	Gewicht Weight kg
G-M	A2936	75.5	293.5	200	413	25.4	151	23.5
	A2940	85	301	200	412	40	165.5	23.5

Warnung: Das anfängliche Bremsmoment neuer Bremsen/Bremsbeläge kann um 30-50% zu den Katalogwerten verringert sein, bis Bremsbeläge u. -scheiben eingelaufen sind!
Warning: The initial torque on new units can be 30% to 50% less than the catalogue value until the friction facing and friction disc are lapped or worn in.

Techn. Daten

Bremskraft F:

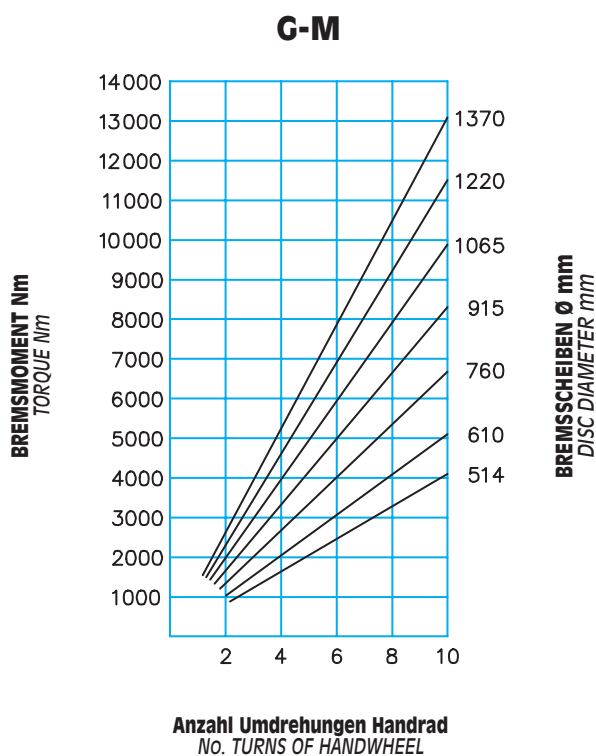
G-M 21000 N 10 Umdrehungen Handrad

dyn. Bremsmoment:
 $= F \cdot (\text{Scheibenradius(m)} - 0.062) = \text{Nm}$

Max. Belagverschleiss: 10 mm

Bremsbelagsdicke (neu): 8 mm

Dauerwärmeleistung: Qc: 14 kW



Technical data

Braking force F:

G-M 21000 N 10 turns of handwheel

Dynamic torque
 $= F \cdot (\text{disc radius in m} - 0.062) = \text{Nm}$

Max total wear: 10 mm

Thickness of new lining: 8 mm

Continuous thermal capacity
 Qc: 14 kW