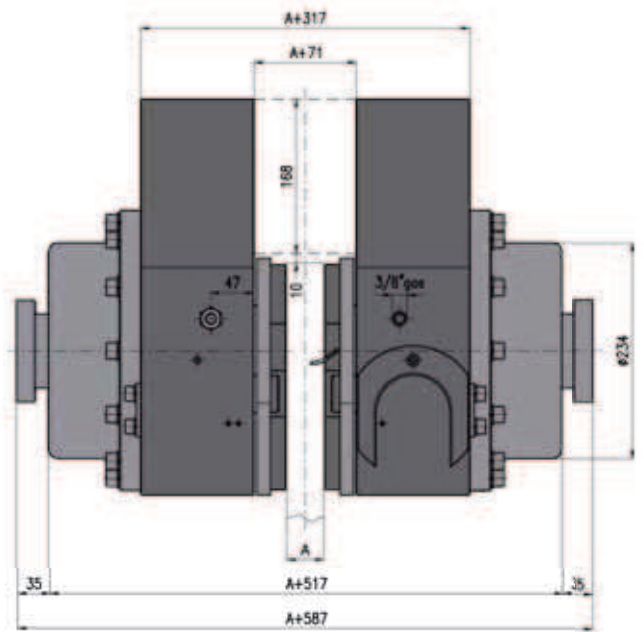
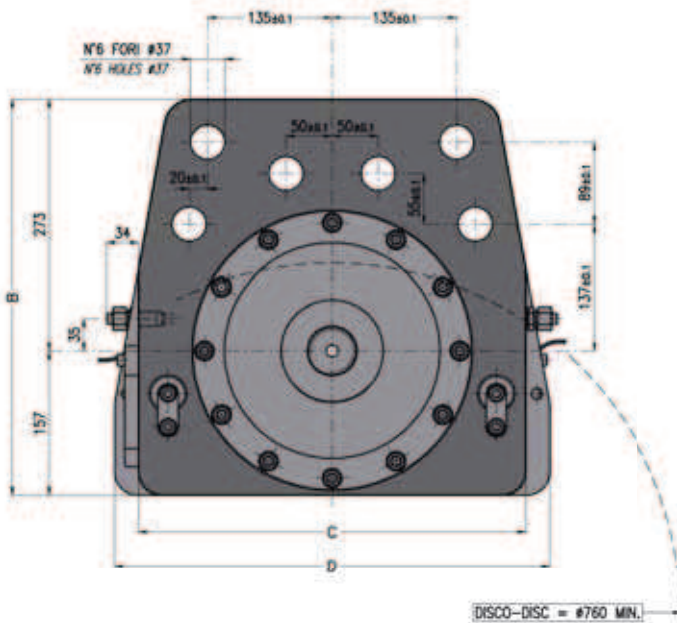
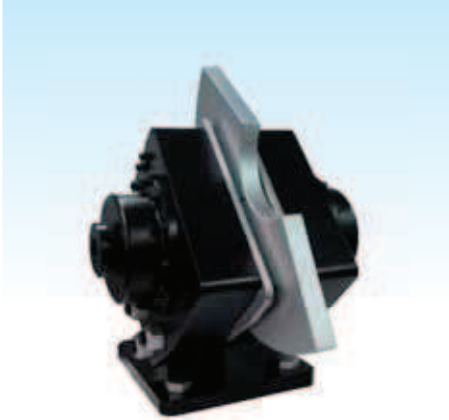


# ID 3000N

**NON UTILIZZABILE SUI DISCHI STANDARD COREMO (Pag. 6)**  
**NOT TO BE USED ON COREMO STANDARD DISCS (Page 6)**



**Lo spessore del supporto centrale deve essere uguale allo spessore del disco + 71 mm**  
**The thickness of center mounting bracket must be same as disc thickness + 71 mm**

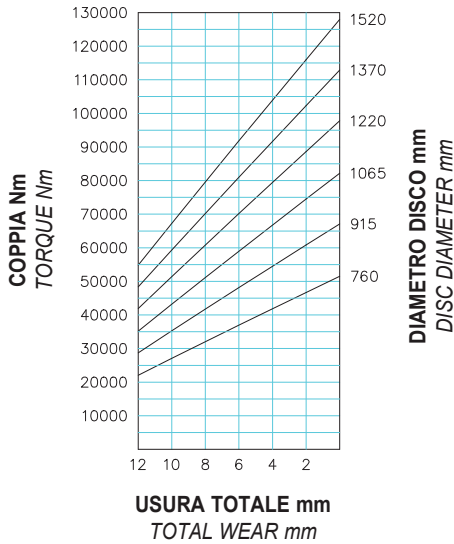
### DIMENSIONI DIMENSIONS

TIPO TYPE	Codice prodotto Product Number					Volume olio Oil Volume dm <sup>3</sup>	Peso Weight kg
		A	B	C	D		
ID 3000N-200	A3898	Spess. disco Disc thick.	430	420	472	1.3	422
ID 3000N-270	A3902		430	420	472	1.3	424

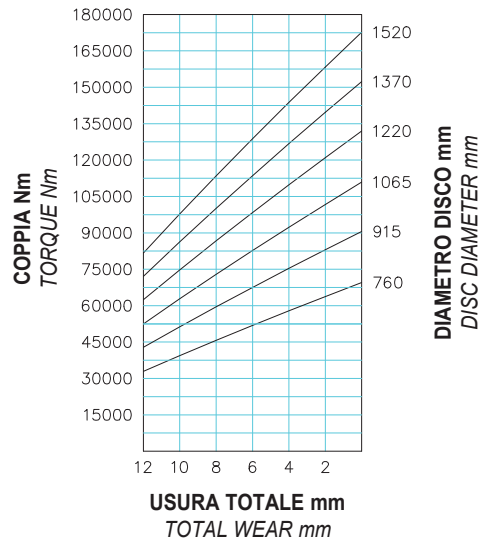
**Attenzione:** La coppia iniziale può essere dal 30% al 50% in meno rispetto al valore nominale, fino all'assestamento del ferodo sul disco.  
**Warning:** The initial torque on new units can be 30% to 50% less than the catalogue value until the friction facing and friction disc are lapped or worn in.

## DATI TECNICI

### ID 3000N-200



### ID 3000N-270



Forza tangenziale F:

**ID 3000N-200** 200000 N

**ID 3000N-270** 270000 N

Coppia dinamica  
=  $F \cdot (\text{raggio del disco in m} - 0.124) = \text{Nm}$   
(ID 3000N-200)

Pressione minima di apertura: 115 bar

(ID 3000N-270)

Pressione minima di apertura: 150 bar

Pressione max: 200 bar

Usura max totale: 20 mm

Spessore del ferodo nuovo: 16 mm

Dissipazione del calore in continuo

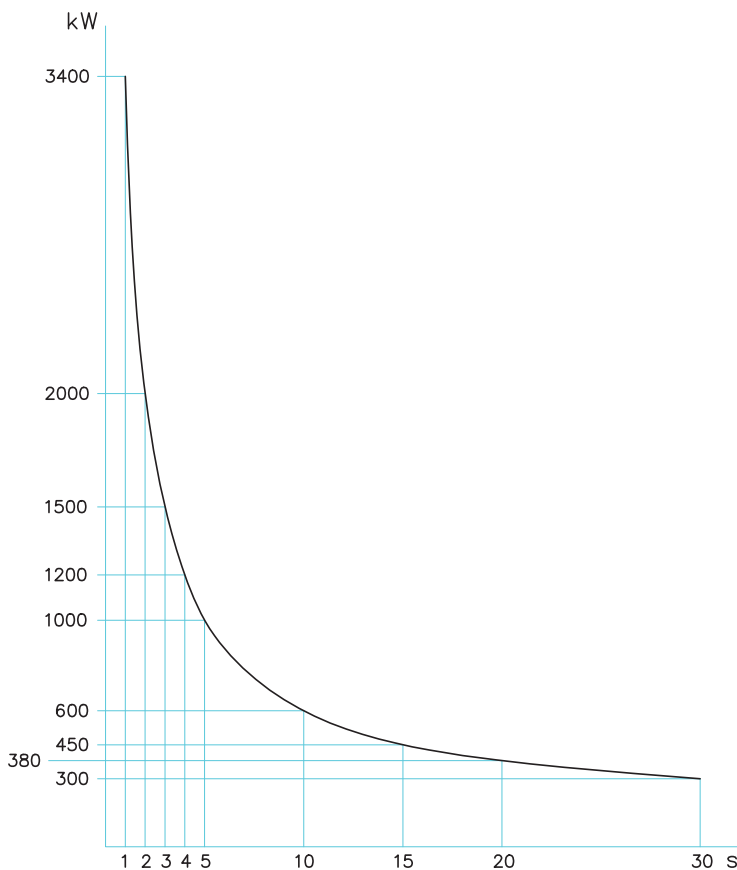
Qc: 80 kW

Tipo di olio:

olio a base minerale SAE/ISO 46

Volume olio per uno spostamento  
di 2 mm per ciascun ferodo: 0.11 dm<sup>3</sup>

## DIAGRAMMA CHART



Dissipazione  
di calore  
per frenatura  
di emergenza

Thermal capacity  
for emergency stop

## TECHNICAL DATA

Braking force F:

**ID 3000N-200** 200000 N

**ID 3000N-270** 270000 N

Dynamic torque:

$F \cdot (\text{disc radius in m} - 0.124) = \text{Nm}$

(ID 3000N-200)

Min. release pressure: 115 bar

(ID 3000N-270)

Min. release pressure: 150 bar

Max pressure: 200 bar

Max total wear: 20 mm

Thickness of new lining: 16 mm

Continuous thermal capacity

Qc: 80 kW

Hydraulic fluid:

Mineral oil based SAE/ISO 46

Total oil displacement for 2 mm  
movement of each pad: 0.11 dm<sup>3</sup>